

Qualifications

If you are currently between the ages of 18-24 and are homeless or at risk of homelessness

Your income level is below 50% of the average median income

You do not have an open DCFS case (no court, DCFS funding/SILP)



Sycamores
a better life

**851 N. OAKLAND AVENUE
PASADENA, CA 91104**

Contact Us

Jaime Limas

jlimas@sycamores.org

(626) 517-2095

Connect LA SPA 8



Connect LA is a program for Transitional Aged Youth (TAY 18-24) aimed at preventing and reducing homelessness

Case Management

Help Build healthy communication and relationship skills

Linkage to DPSS benefits, employment resources, educational resources, etc.

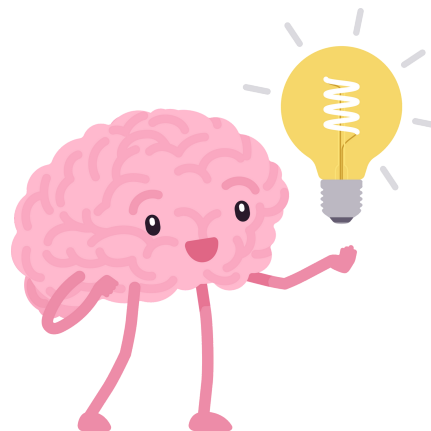
Assistance with strengthening life skills

Limited Financial Assistance

Etc.

Counseling

Therapeutic interventions designed to assist individuals with building and strengthening positive & healthy relationships with supportive individuals



Service Areas

South Bay
(El Segundo, Gardena, Harbor City, Hawthorne, Inglewood, Lawndale, Lennox, Long Beach*, Hermosa Beach, Manhattan Beach, Palos Verdes Estates, Rancho Dominguez, Rancho Palos Verdes, Redondo Beach, Rolling Hills, Rolling Hills Estates, San Pedro, Torrance, Wilmington, etc.)



- 1 Antelope Valley
- 2 San Fernando Valley
- 3 San Gabriel Valley
- 4 Metro
- 5 West
- 6 South
- 7 East
- 8 South Bay includes Catalina Island