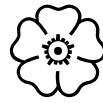
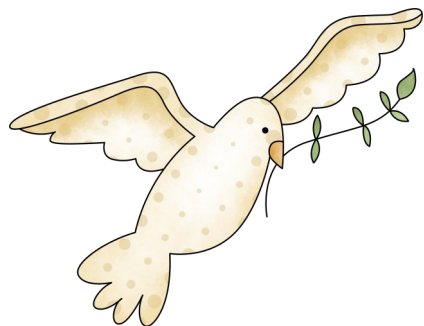


# Services Provided

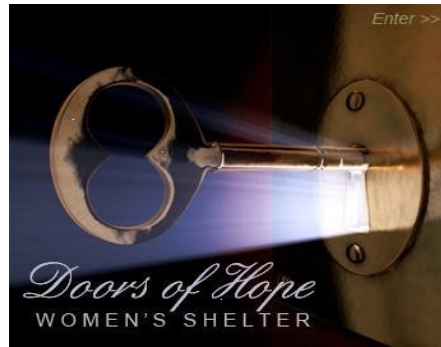
- Up to 14-night Emergency Shelter Services for single, homeless women. Includes showers, beds, clean clothing and meals.
- Chapel services every evening at 7:00PM.
- Bibles / New Testaments provided.
- Share & Care Group, Tuesday afternoons
- Mail Service
- Referrals to local agencies

There are 180,000 homeless women in Los Angeles County. Most of them are abused and broken after only one month of living on the streets. Many never recover and are often forgotten by society.

Currently, there are three times more animal shelters in Los Angeles County than shelters for homeless women. Until our economy improves, our homeless population is expected to grow. The need for this shelter is urgent.



Director of Operations  
Linda Stratton



**Doors of Hope Women's Shelter**  
529 Broad Avenue  
Wilmington, CA 90744  
(310) 518-3667, Fax (310) 513-6113

dohws@att.net  
www.doorsofhopewomensshelter.org

**OFFICE HOURS | CHECK IN**  
**9:00AM-12:00PM, M,T,Th,F+S**  
**10AM-12PM WED'S**

**CLOSED ON SUNDAYS**  
**+ CHRISTMAS DAY**

If you would like to make a monetary donation toward our many needs, you may do so at the following internet address:  
[www.doorsofhopewomensshelter.org](http://www.doorsofhopewomensshelter.org)

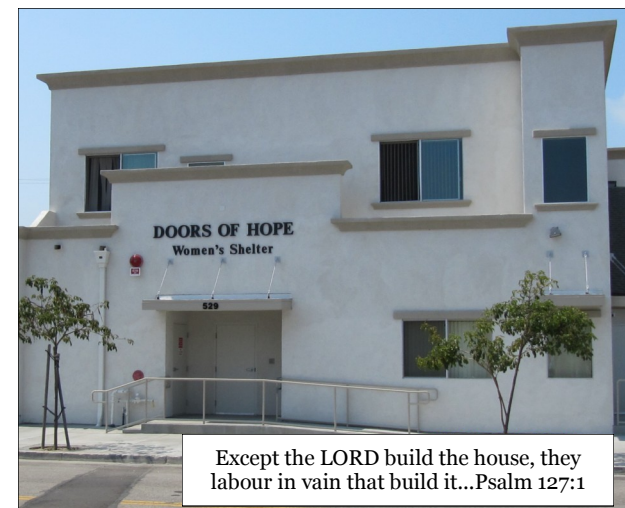
OR with material items: in person at our location during business hours.



*A Ministry of Beacon Light Mission serving the homeless and needy in the South Bay area for over 100 years with "Soup, Soap and Salvation."*

## Mission Statement

Our mission is to minister the love and grace of Jesus Christ to homeless women in the South Bay by providing a safe and nurturing environment where they can receive food, clothing, temporary shelter and spiritual encouragement in their present life circumstances. We seek to identify the extreme challenges of homeless women and provide support to help them transition from despair to personal spiritual wholeness.



Except the LORD build the house, they labour in vain that build it...Psalm 127:1

# History

For over 110 years, the **Beacon Light Mission** (a privately supported ministry) has provided for the homeless in the San Pedro & Wilmington area. It is a faith-based ministry that had its beginning in 1902 and got its name from Beacon Street where it originated in San Pedro. At the time it was considered the roughest street in the nation due to all the crime and violence found there.

# Doors of Hope

Psalm 127:1 says: *"Unless the Lord builds this house, the builders labor in vain."* The Lord definitely built this house. He was with us every step of the way, from the moment He gave the Beacon Light Mission (BLM) Board the vision of reaching out to women to this very day. The BLM has been providing Soup, Soap and Salvation. At the end of the day, they could provide homeless men a bed for the night, but women who came for help had to be turned back out onto the cold, damp and dangerous streets.

November 2007 the Board felt something needed to be done. At a time when the Mission was running in the red of approx. \$1,000/mo and had limited reserves, trusting the Lord they stepped out in faith and committed themselves to moving forward with a shelter for women.

This was started by reaching out to the local churches for women to serve on a forming committee. We met monthly along

with various members of the BLM Board, including their Director and their President. We prayed, we talked, we prayed more, we did fund raisers, we made a cookbook and we started the building plans. This process took almost 3 years as there were numerous obstacles that had to be overcome. But, we serve a Gracious God. Every time we faced a rejection, we just stepped forward and the Lord opened the door for us. In January 2011 the building was started and on September 19, 2011 the Doors of Hope Women's Shelter doors were opened!!! All Praise to God.

God has blessed the mission abundantly. In addition to providing shelter for women, we have been able to help and bless other ministries. We have seen lives changed in many ways. We have seen people come to Christ. Jeremiah 29:11 says: *"For I know the plans I have for you," declares the LORD, "plans to prosper you and not to harm you, plans to give you a hope and a future."*

Every Tuesday we have Share and Care Group for our ladies.... And then on Saturday is a Bible Study. Wednesday's, all the 'staff' come together and participate in a Bible Study. Plus, on Friday evenings, there is group who attend Celebrate Recovery.

The facility is supported solely through donations. The Lord has blessed the mission with financial support from individuals, churches, industrial and professional foundations. Because it is Christian—the shelter does not receive government funding.

If you have a willing heart, a giving spirit and a desire to help these less fortunate women, please volunteer your services in the following areas:

- Intake New Guests — 9am-12pm
- On-site workshops
- Mentorship / Spiritual guidance
- General maintenance
- Food Prep / Clothing distribution
- Answer Phones / Take donations 1-5pm
- DayRoom Monitor M—F 2:45-6:45pm  
- Weekends: Sa—Su 3:45-6:45pm

2 Corinthians 9:7

*Each of you should give what you have decided in your heart to give, not reluctantly or under compulsion, for God loves a cheerful giver.*

