



L.A. Care



Community Resource Center

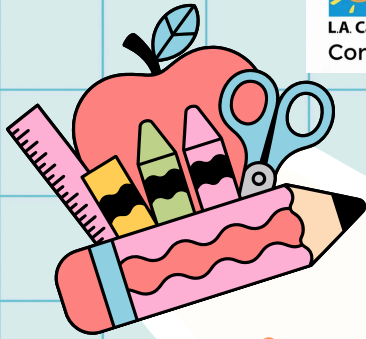


blue california  
Promise Health Plan



Soledad  
Enrichment  
Action

"Transforming lives since 1972"



# Back-to-School

## Community Resource Fair

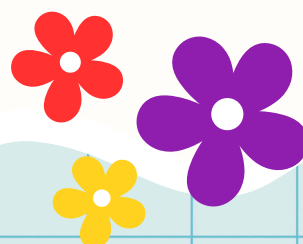
# FRIDAY, JULY 10<sup>TH</sup> 3 - 7 PM

### **\*FREE\* School Supplies and Backpack GIVEAWAY for Students\***

### **FOOD - GAMES - RESOURCES**

### **AND MORE!!**

\*One backpack per student, while supplies lasts.  
Ages 3 years old & up. Students should be present.  
Limited quantity may be available for students who  
are not present.



2430 N. Broadway, Los Angeles, CA 90031 |



213.294.2840



L.A. Care



Community Resource Center

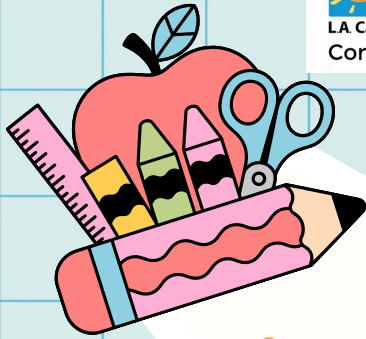


blue  
california  
Promise Health Plan



Soledad  
Enrichment  
Action

Transforming lives since 1972



# Regreso a clases



## Feria Comunitaria de Recursos

# VIERNES, 10 DE JULIO 3 - 7 PM

### \*ENTREGA GRATUITA\* Mochilas y Útiles escolares para Estudiantes\*

### COMIDA - JUEGOS - RECURSOS

### ¡Y MUCHO MÁS!

Una mochila por estudiante, hasta agotar existencias.  
Para edades de 3 años en adelante. Los estudiantes  
deben estar presentes. Es posible que haya una  
cantidad limitada disponible para estudiantes que no  
estén presentes.



2430 N. Broadway, Los Angeles, CA 90031 |



213.294.2840